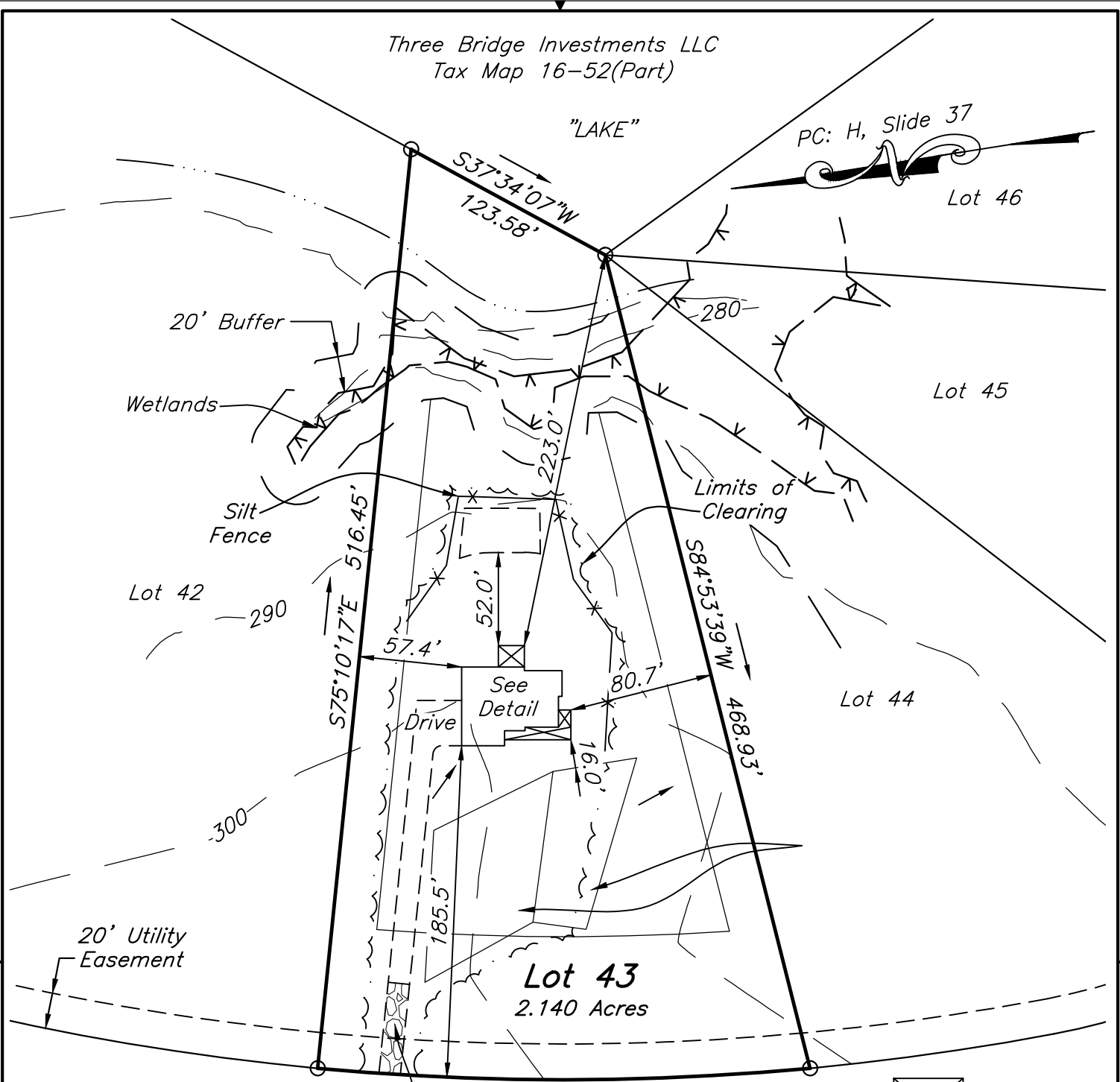


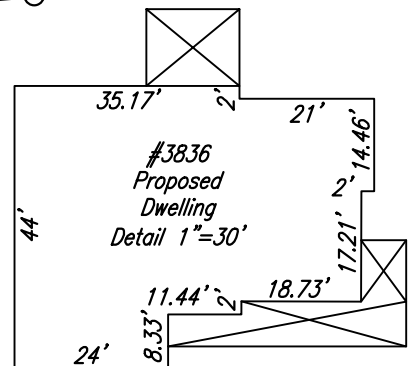
Three Bridge Investments LLC
Tax Map 16-52(Part)



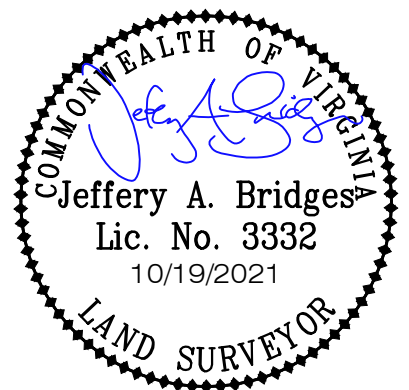
R-5 Zoning
F=80'
S=25'
R=40'

Stone Construction Entrance
L=275.67'
R=1475.00'

MILLMOUNT DRIVE
50' R/W



1. The intent of this plat is to show the location of a proposed dwelling for building permit purposes and is not intended to represent an actual field survey.
2. This plat is compiled from plats of record and without the benefit of a title report. No improvements and not all easements may be shown.
3. Contours and elevations are unregulated topographic information obtained from Construction Plans and is for general information only. Topographic information should be field verified and certified by an appropriate professional prior to its use in the design, modification or construction of improvements or flood plain determination.
4. Silt Fence, Limits of Clearing, Drive and Stone Construction Entrance as shown are approximate and should be adjusted per field conditions or as directed by the County Inspector.



RE: Clay Street Builders
DATE: 10/19/2021
SCALE: 1"=80'
JOB NO.: 55210743.HS
DRAWN BY: BCW
CHECKED BY: JAB

PROPOSED
IMPROVEMENTS ON
LOT 43, SECTION 1
WESTLAKE AT MILL MOUNT
POWHATAN COUNTY, VIRGINIA

PLANNERS / ARCHITECTS / ENGINEERS / SURVEYORS
ROANOKE / RICHMOND / NEW RIVER VALLEY / STAUNTON / HARRISONBURG / LYNCHBURG
15871 City View Drive, Suite 200 / Midlothian, Virginia 23113 / Phone (804) 794-0571 / www.balzer.cc



162160505211635210743.HS.DRAWING\$55210743.HS.DWG