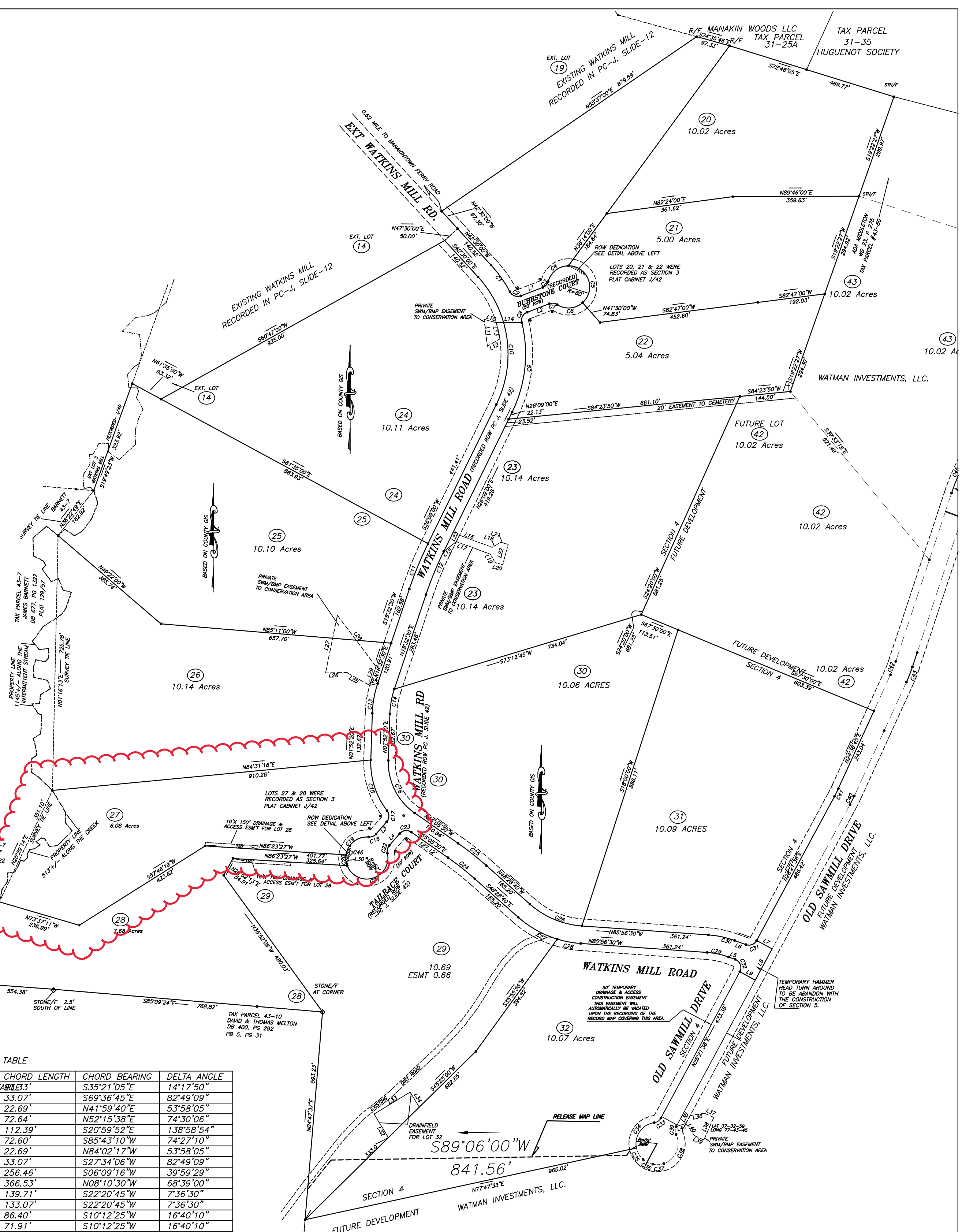


LINE	BEARING	DISTANCE
L1	N68°58'40"E	67.24'
L2	S68°58'40"W	67.24'
L3	S40°58'26"W	46.31'
L4	N40°58'26"E	45.17'
L5	S70°00'00"E	19.46'
L6	N70°00'00"W	34.15'
L7	S61°38'24"E	50.00'
L8	S28°21'35"W	101.07'
L9	N61°38'24"W	50.00'
L10	N74°49'22"W	36.09'
L11	S07°05'00"E	77.13'
L12	N59°42'49"E	41.29'
L13	N12°35'38"W	47.41'
L14	S89°46'54"W	72.52'
L15	N52°13'37"E	45.50'
L16	S69°37'57"E	98.91'
L17	S69°37'57"E	102.93'
L18	N59°41'49"E	28.22'
L19	S30°18'11"E	28.21'
L20	S75°18'11"E	22.07'
L21	S75°18'11"E	22.07'
L22	N14°41'49"E	60.00'
L23	S26°09'00"W	20.10'
L24	S76°24'06"W	23.33'
L25	N60°43'34"W	74.76'
L26	S88°58'49"W	60.51'
L27	N11°36'51"E	167.39'
L28	S37°01'02"E	182.39'
L29	S18°17'48"W	56.67'
L30	N09°34'15"E	61.37'
L31	S60°29'14"E	60.00'
L32	N31°17'11"W	78.50'
L33	N58°42'49"E	120.00'
L34	S31°17'11"E	50.14'
L35	N28°21'36"E	25.31'
L36	N80°35'01"E	41.32'
L37	S66°03'46"E	29.14'
L38	S23°56'14"W	70.00'
L39	N66°03'46"W	29.14'
L40	N34°54'06"W	42.61'
L41	N72°19'33"E	28.81'

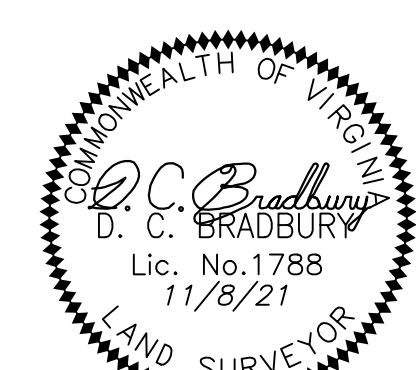
CURVE	ARC LENGTH	RADIUS	CHORD LENGTH	CHORD BEARING	DELTA ANGLE
C1	93.57'	376.00'	330.00'	S35°21'05"E	14°17'50"
C2	36.14'	25.00'	33.07'	S69°36'45"E	82°49'09"
C3	23.55'	25.00'	22.69'	N41°59'40"E	53°58'05"
C4	78.02'	60.00'	72.64'	N52°15'38"E	74°30'06"
C5	145.54'	60.00'	112.39'	S20°59'52"E	138°58'54"
C6	77.97'	60.00'	72.60'	S85°43'10"W	74°27'10"
C7	23.55'	25.00'	22.69'	N84°02'17"W	53°58'05"
C8	36.14'	25.00'	33.07'	S27°34'06"W	82°49'09"
C9	261.74'	375.00'	256.46'	S06°09'16"W	39°59'29"
C10	389.40'	325.00'	366.53'	N08°10'30"W	68°39'00"
C11	139.81'	1052.84'	139.71'	S22°20'45"W	7°36'30"
C12	133.17'	1002.83'	133.07'	S22°20'45"W	7°36'30"
C13	86.71'	298.03'	86.40'	S10°12'25"W	16°40'10"
C14	72.16'	248.03'	71.91'	S10°12'25"W	16°40'10"
C15	154.57'	225.00'	151.55'	S17°48'31"E	39°21'41"
C16	173.99'	175.00'	166.91'	N26°36'35"W	56°57'50"
C17	34.24'	25.00'	31.62'	S01°44'32"W	78°27'46"
C18	23.55'	25.00'	22.69'	S67°57'28"W	53°58'05"
C19	90.29'	60.00'	82.01'	S51°50'01"W	86°13'00"
C20	31.33'	60.00'	30.97'	S06°13'54"E	29°54'51"
C21	179.91'	60.00'	119.69'	N72°54'30"E	171°48'20"
C22	23.55'	25.00'	22.69'	N13°59'23"E	53°58'05"
C23	36.62'	25.00'	33.44'	N82°56'28"E	83°56'04"
C24	97.00'	840.35'	96.95'	S51°47'05"E	6°36'50"
C25	102.78'	890.35'	102.72'	N51°47'05"W	6°36'50"
C26	163.47'	250.00'	160.57'	N67°12'35"W	37°27'50"
C27	128.34'	300.00'	127.37'	S60°44'01"E	24°30'42"
C28	67.82'	300.00'	67.67'	S79°27'56"E	12°57'08"
C29	62.60'	225.00'	62.40'	S77°58'15"E	15°56'30"
C30	76.51'	275.00'	76.27'	N77°58'15"W	15°56'30"
C31	35.62'	25.00'	32.68'	N69°10'48"E	81°38'25"
C32	42.92'	25.00'	37.84'	S20°49'13"E	98°21'35"
C33	23.55'	25.00'	22.69'	S55°20'39"W	53°58'05"
C34	99.00'	60.00'	88.14'	S35°03'37"W	94°32'08"
C35	38.08'	60.00'	37.45'	S30°23'24"E	36°21'55"
C36	31.42'	60.00'	31.06'	S63°34'22"E	30°00'01"
C37	31.42'	60.00'	31.06'	N86°25'39"E	29°59'58"
C38	101.62'	60.00'	89.90'	N22°54'35"E	97°02'07"
C39	23.55'	25.00'	22.69'	N01°22'34"E	53°58'05"
C40	27.80'	425.00'	27.79'	N26°29'11"E	3°44'50"
C41	24.53'	375.00'	24.52'	S26°29'11"W	3°44'50"
C42	41.04'	375.00'	41.02'	S21°28'38"W	6°16'15"
C43	46.52'	425.00'	46.49'	N21°28'38"E	6°16'15"
C44	107.92'	575.00'	107.77'	N23°43'08"E	10°45'15"
C45	117.31'	625.00'	117.14'	S23°43'08"W	10°45'15"
C46	64.42'	60.00'	61.37'	N09°34'15"E	61°31'09"
C47	62.83'	60.00'	60.00'	S60°29'14"E	60°00'06"

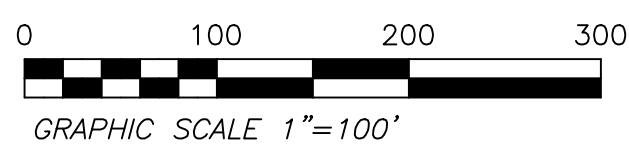
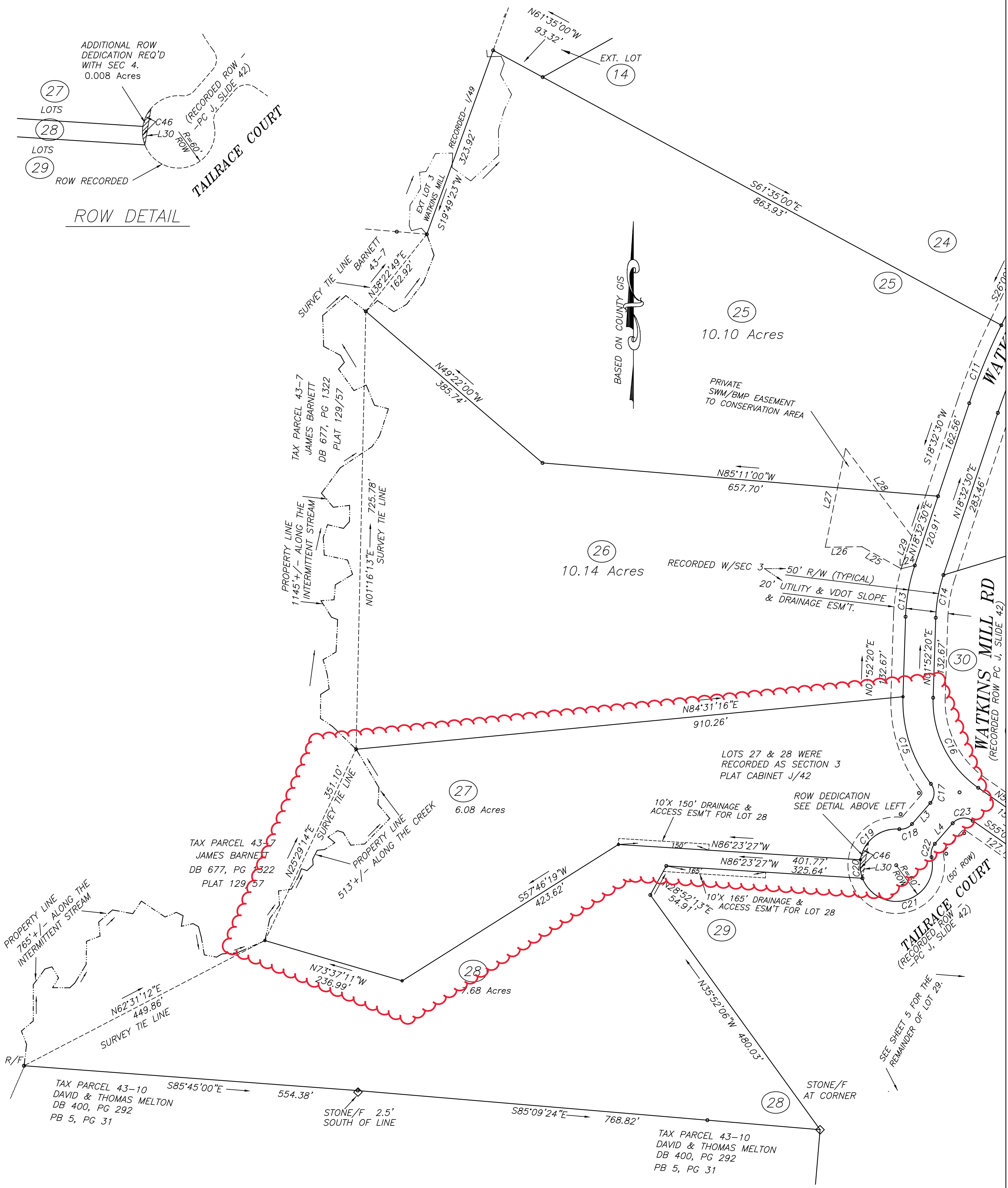
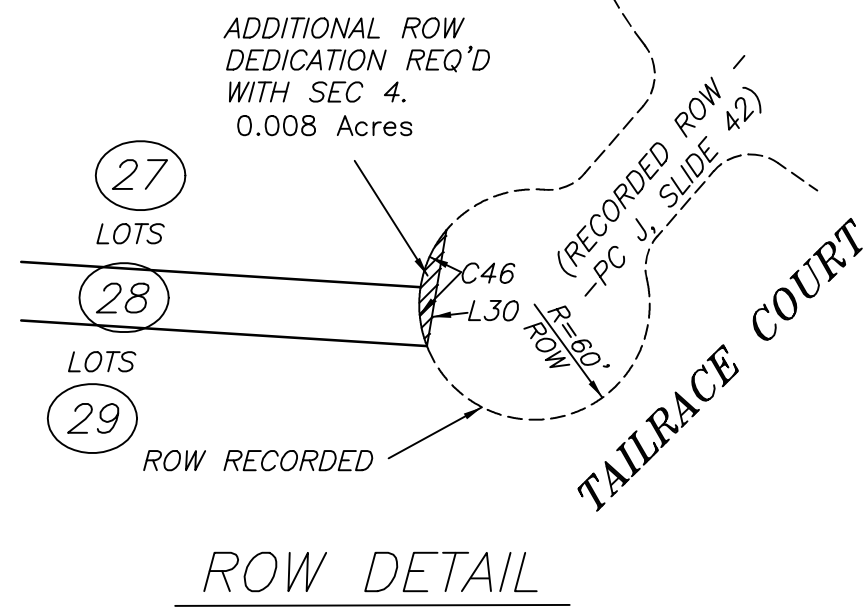


WATKINS MILL
SECTION 4
& RE-SUBDIVISION OF SECTION 3
 HUGUENOT DISTRICT, POWHATAN COUNTY, VIRGINIA
 DATE: NOVEMBER 8, 2021
OVERALL LAYOUT OF SECTION 4
AND CURVE & LINE TABLES

D. C. BRADBURY, INC.
 LAND SURVEYOR — PROFESSIONAL ENGINEER
 3575 RICHARD'S RUN — POWHATAN, VIRGINIA 23139
 PHONE # 804-598-3618 / CELL # 804-519-4004
 SHEET 2 OF 8

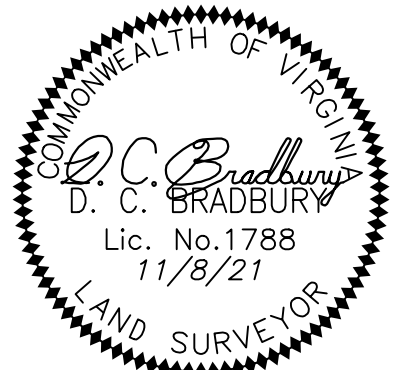
POWHATAN COUNTY CASE FILE#21-___-FSP
 RE FILE: WATKINS MILL SEC 4 RECORD MAP.DWG





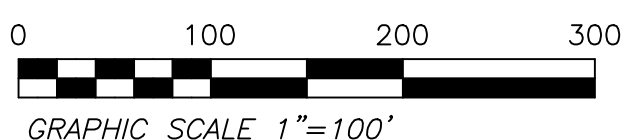
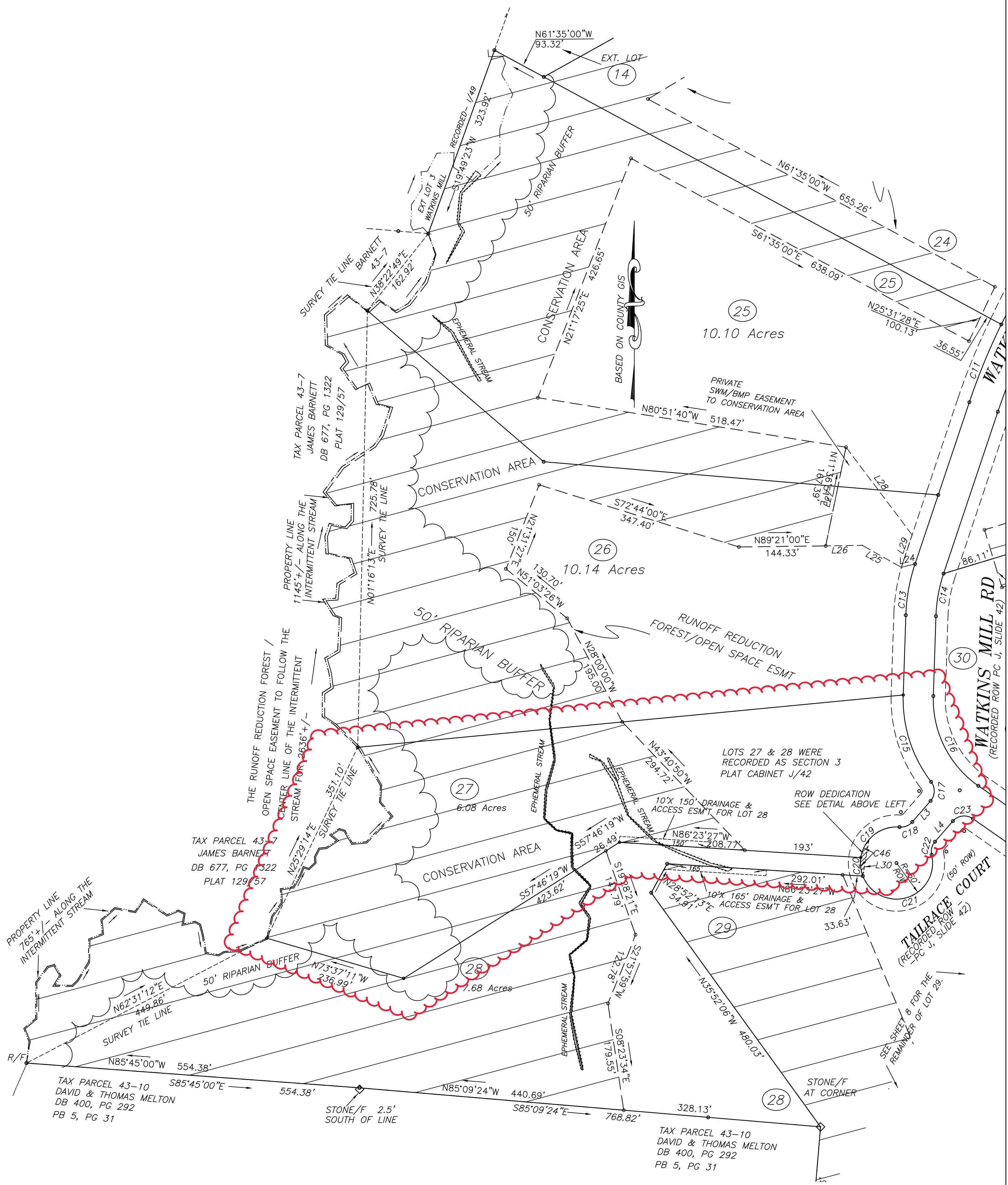
WATKINS MILL
SECTION 4
& RE-SUBDIVISION OF SECTION 3

HUGUENOT DISTRICT, POWHATAN COUNTY, VIRGINIA
 DATE: NOVEMBER 9, 2021

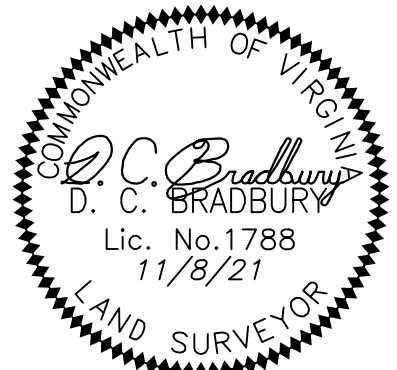


D. C. BRADBURY, INC.
 LAND SURVEYOR - PROFESSIONAL ENGINEER
 3575 RICHARD'S RUN - POWHATAN, VIRGINIA 23139
 PHONE # 804-598-3618 / CELL # 804-519-4004
 SHEET 4 OF 8

POWHATAN COUNTY CASE FILE#21-___-FSP
 RE FILE: WATKINS MILL, SEC 4 RECORD MAP.DWG



WATKINS MILL
SECTION 4
& RE-SUBDIVISION OF SECTION 3
 HUGUENOT DISTRICT, POWHATAN COUNTY, VIRGINIA
 DATE: NOVEMBER 8, 2021



D. C. BRADBURY, INC.
 LAND SURVEYOR - PROFESSIONAL ENGINEER
 3575 RICHARD'S RUN - POWHATAN, VIRGINIA 23139
 PHONE # 804-598-3618 / CELL # 804-519-4004
 SHEET 7 OF 8