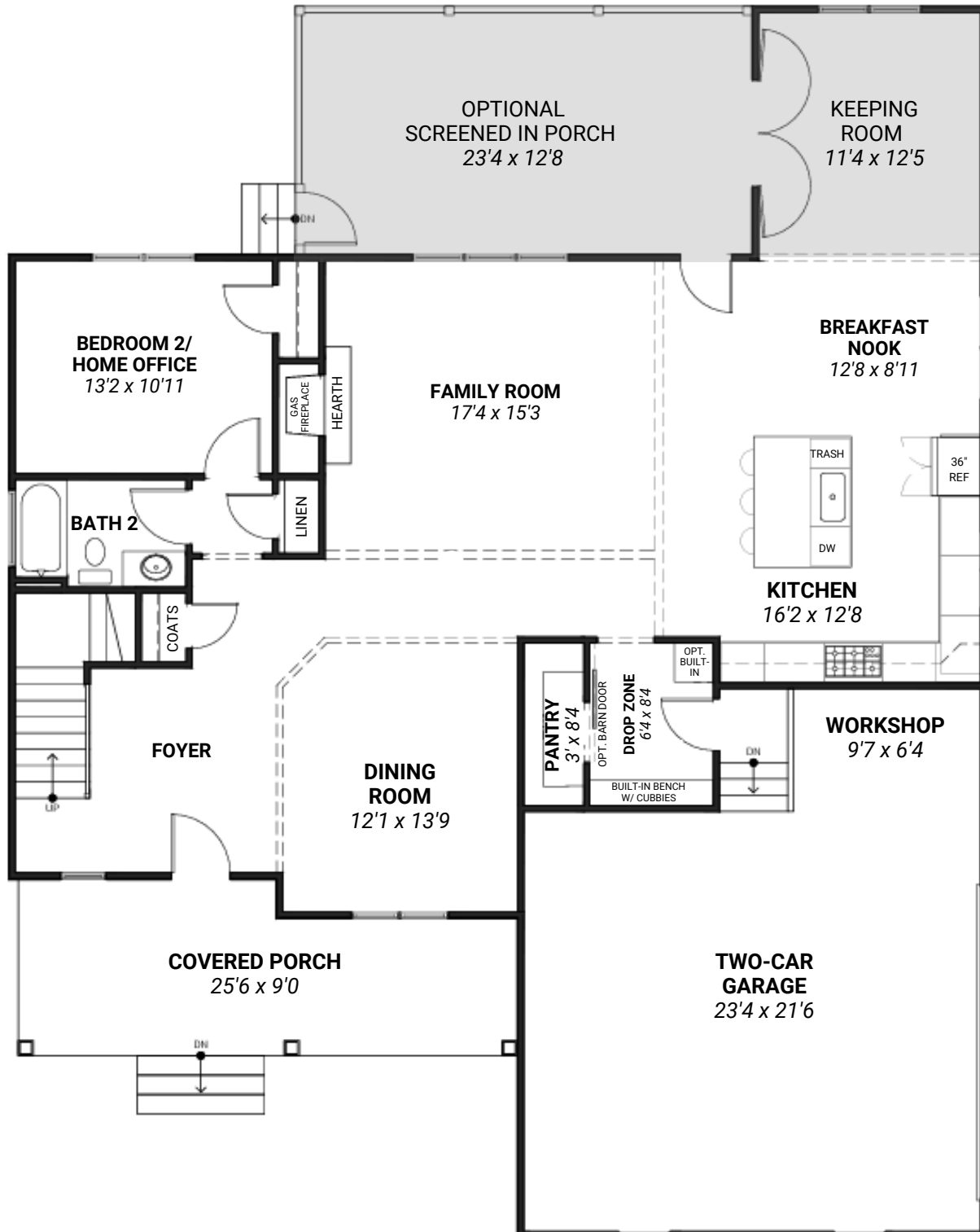


THE SPEAKMAN I

5 BEDS / 5 BATHS / 3,461 FINISHED + 567 UNFINISHED SQ.FT.



FIRST FLOOR

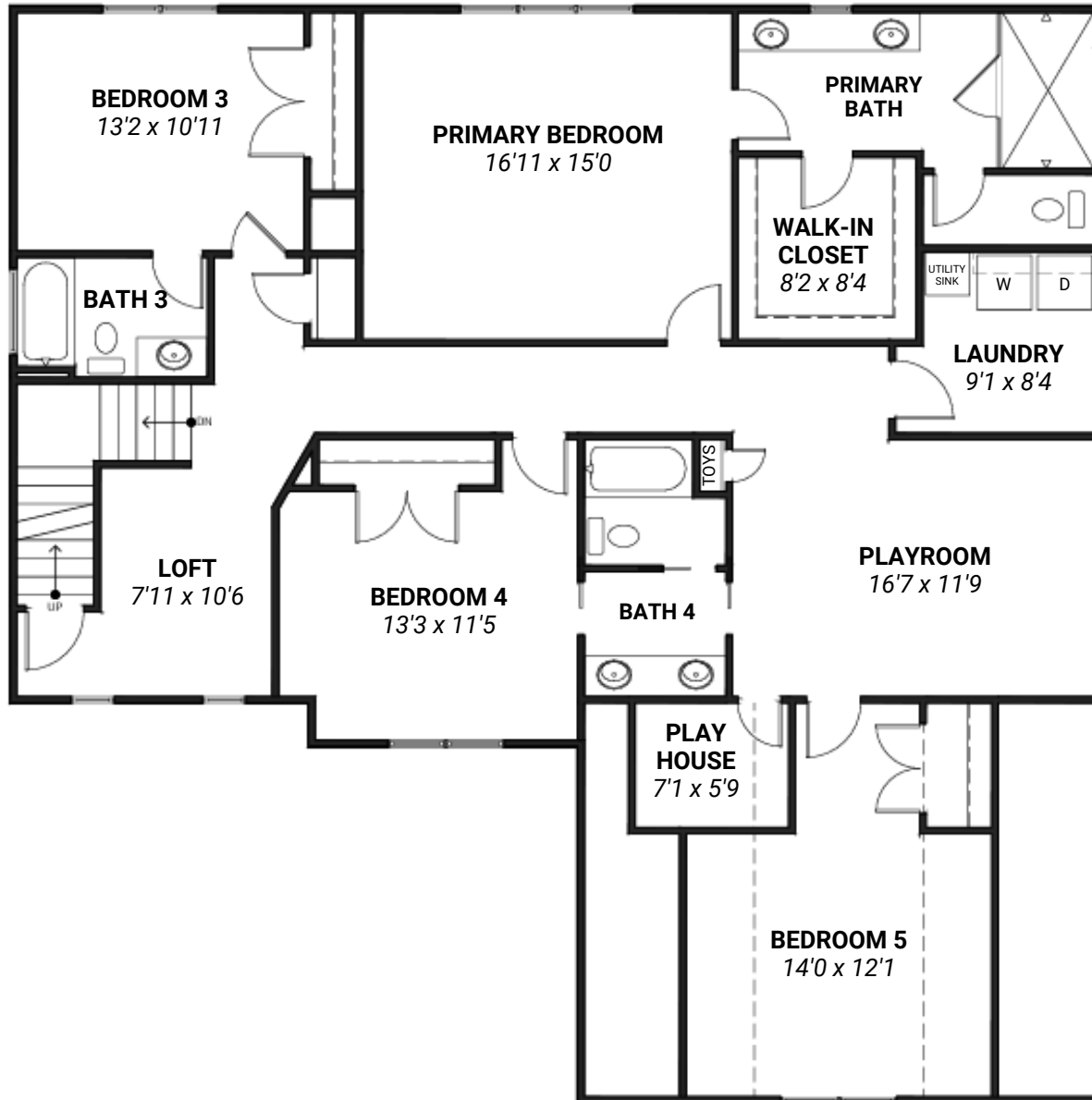


THE SPEAKMAN I

5 BEDS / 5 BATHS / 3,461 FINISHED + 567 UNFINISHED SQ.FT.



SECOND FLOOR



BONUS ROOM

